

# Keypad Creating a New Passcode Instructions

Please follow these step-by-step instructions to set or change the Keypad passcode as part of the Garage Door Lock system.

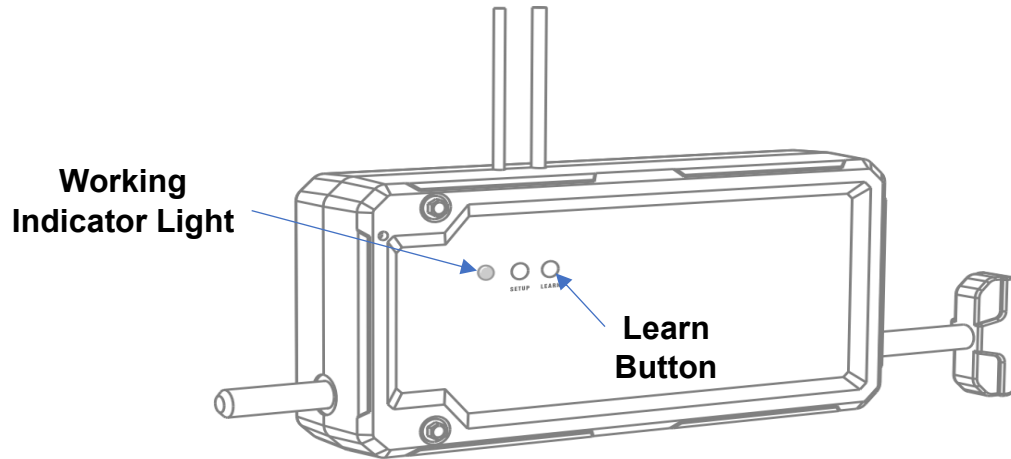


Figure 1: Lock Box

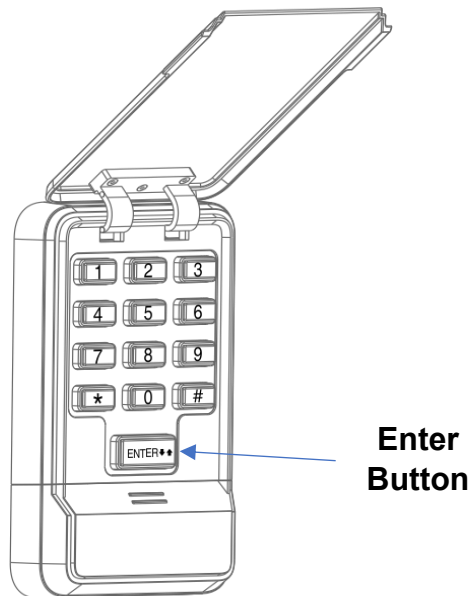


Figure 2: Keypad

## Steps:

1. Short press the "Learn" button on the Lock Box (see Figure 1). The Working Indicator Light will turn to yellow and keep flickering slowly for ~30 seconds then time out. Work quickly as the new passcode can **only** be set while the Working Indicator Light is flashing yellow.
2. Enter a 6-digit passcode then press # (see Figure 2). (**Example: 1 2 3 4 5 6 #**)
3. Try the new passcode to ensure it was set correctly. Enter your new 6-digit passcode then press "Enter".

## Notes:

1. If successful, The Working Indicator Light on the Lock Box will turn white and flicker/beep twice.