

Additional Remote Control Pairing Instructions

Please follow these step-by-step instructions to pair additional car remotes with the Garage Door Lock system.

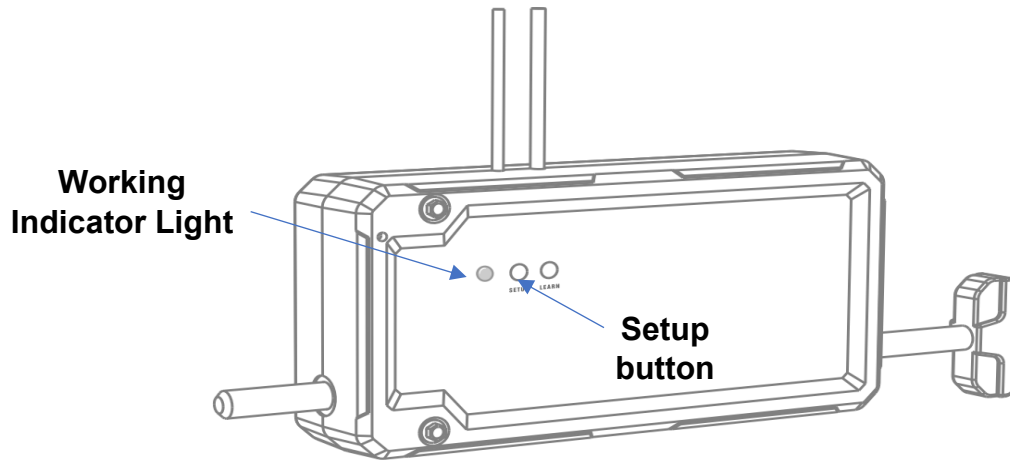


Figure 1: Lock Box

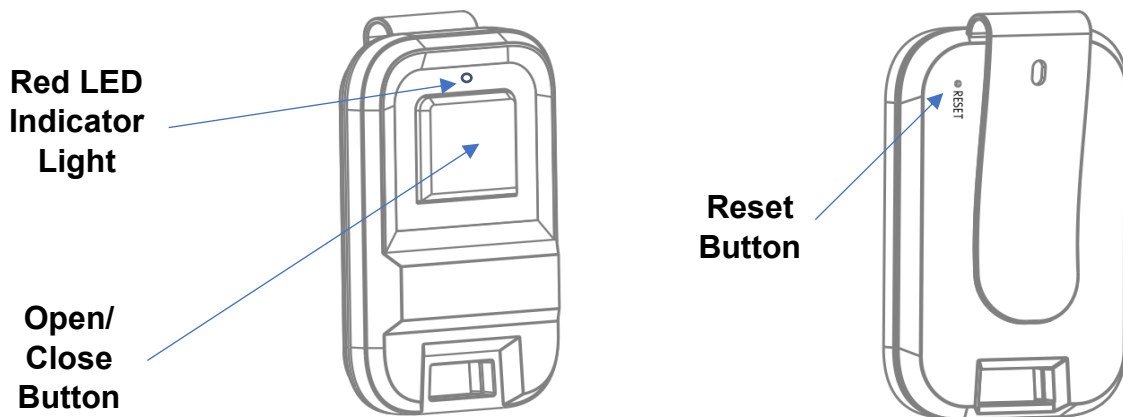


Figure 2: Remote Control

Steps:

1. Gather together the new car Remote Control and a needle
2. Short press the "Setup" button on the Lock Box (see Figure 1). The Working Indicator Light will turn to green and keep flickering slowly.
3. Press and hold down the "Reset" button (see Figure 2) on the Remote Control with a needle until the red LED indicator light turns on (about 4-5 seconds). The LED light will stay on for about 2 seconds and then will turn off.

Notes:

1. If the configuration was **not** successful, the red indicator light on the Remote Control will flash on/off for 30 seconds then turn off automatically. If this happens, re-do step 3. Just make sure the Working Indicator Light on the Lock Box is still flashing green.
2. If the configuration was successful, the Working Indicator Light on the Lock Box will turn to white and flicker twice. After configuration is successful, the user can press the Remote Control button to open and close the Garage Door Lock.